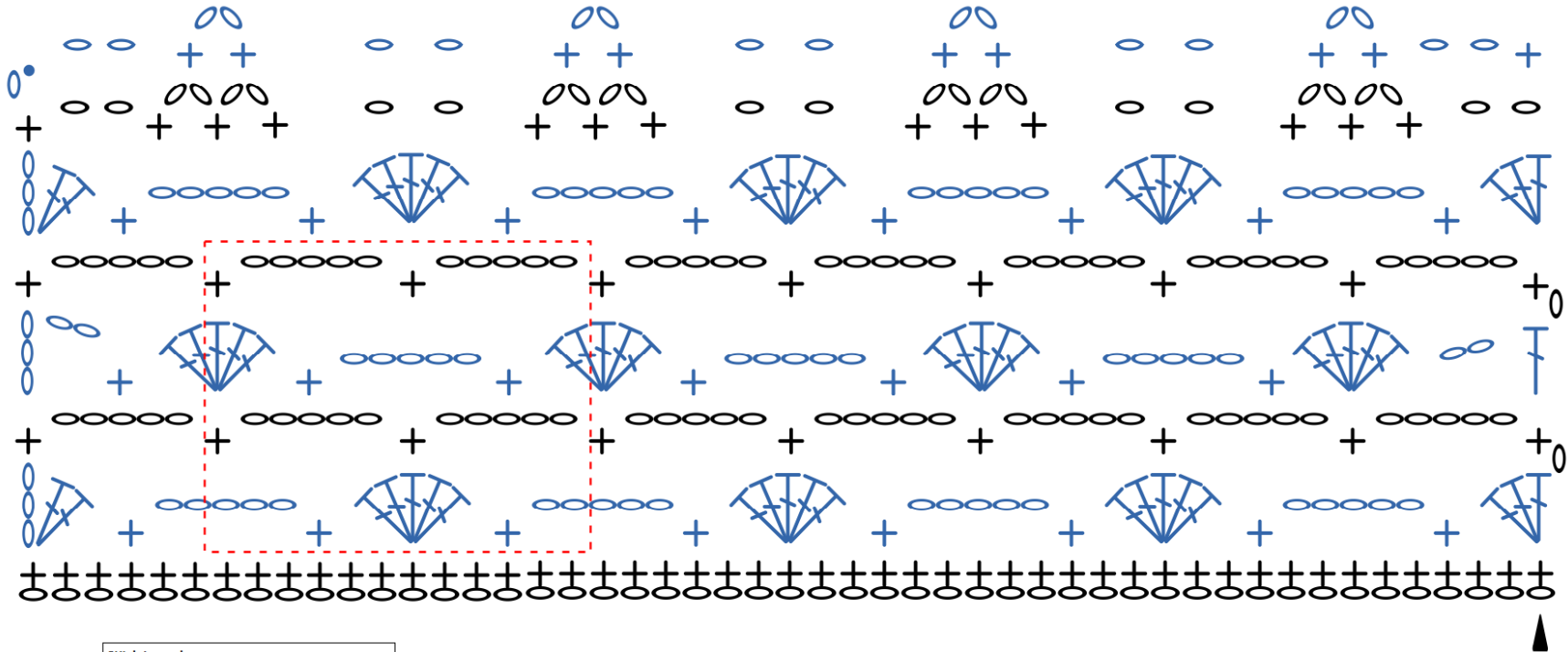


# Autumn Splendor Wrap



Stitch Legend	
	ch - chain
	dc - double crochet
	sc - single crochet
	fcc - foundation single crochet
	sl st - slip stitch
	start -
	pattern rep

**Pattern rep is 12 sts (3" in gauge).  
Determine number of reps times 12,  
plus 1 st to determine base row count.**