

Izabella Baby Bonnet



Years ago, I made several bonnets from a magazine and had always wanted to come up with my own design for the bonnet and for the filet crochet part. Included with this pattern are six different filet charts that you can choose from. Also included are blank templates so you can design your own filet charts.

Two sizes are provided, for newborn to three months and three to six months. It is possible to make a larger size by using a larger thread, like size 8 or 5, and a larger hook but you'll need to use a bit of trial and error to get the correct sizing.

Named for my second cousin, Izabella Dorothy.

Sizes and Materials List ...

Size:	Newborn to 3 months (3 to 6 months)
Hook(s):	Susan Bates US 7 (1.5 mm) or Boye US 8 (1.5 mm)
Yarn:	Any size 10 crochet thread

Izabella Baby Bonnet

Colors & Approx. Yardage

Any color, 285 yds

Notions

Yarn Needle
1/4" Ribbon to match crochet thread, 1 yd.
Row Markers

Gauge:

8 ch-2 sps = 2"
Always take time to check your gauge, change hk size as needed



Notes ...

Stitches Used

Chain (ch)
Slip Stitch (sl st)
Single Crochet (sc)
Double Crochet (dc)
Treble Crochet (trc)

Abbreviations

Each (ea)
Hook (hk)
Skip (sk)
Stitch(es) (st / sts)

Instructions ...

Back

Round 1

Ch 4, 2 dc in fourth ch from hk, ch 2, [3 dc, ch 2] 5 times in same ch, join with sl st in beg dc. Mark as right side. (6 ch-2 sps)

Round 2

Sl st in next dc, ch 3 (beg dc here and throughout), dc in same st, dc in next dc, *2 dc in next ch-2 sp, ch 2, sk next dc, dc in next dc,* rep from * to * around, join with sl st in beg dc. (30 dc)

Round 3

Sl st in next dc, ch 3, dc in same st, *dc in next 3 dc, 2 dc in ch-2 sp, ch 2, sk next dc, 2 dc in next dc,* rep from * to * around, join with sl st in beg dc. (48 dc)

Rounds 4-9(10)

Sl st in next dc, ch 3, dc in same st, *dc in ea dc to ch-2 sp, 2 dc in ch-2 sp, ch 2, sk next dc, 2 dc in next dc,* rep from * to * around, join with sl st in beg dc. (114(126) dc)

Round 10(11)

For this round, consider ea ch-2 sps to be 2 sts.

Ch 1, sc in same st as joining, pm, sc in next 6(9) sts, *2 sc in next st, sc in next 9(4) sts,* rep from * to * around to last 8(12) sts, sc in next 6(10) sts, leaving last ch-2 sp unworked. (136(160) sc)

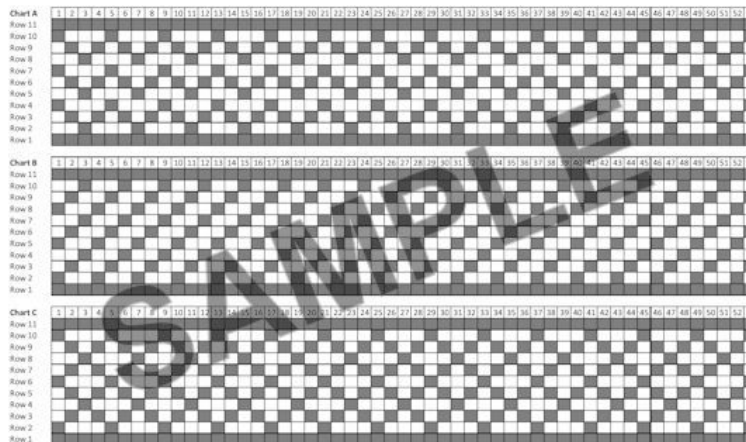
Izabella Baby Bonnet

Crown

Row 1	Ch 3, turn, dc in ea sc across to marked st. (136(160) dc)
Rows 2-19(21)	<p>Pick a filet chart from the ones provided below, then follow the instructions below for the size being made.</p> <p>For charts A through E:</p> <ul style="list-style-type: none"> For 0-3 mths, follow rows 2-10, twice, across columns 1-43 For 3-6 mths, follow rows 2-10, twice, then rows 2 and 3 once more, across columns 1-53 <p>For chart F:</p> <ul style="list-style-type: none"> For 0-3 mths follow chart F(1) for rows 2 through 19. For 3-6 mths, follow chart F(2) for rows 2 through 21.
Row 20(22)	Ch 3, turn, *2 dc in next ch-2 sp, dc in next dc,* rep from * to * across. (Shown as row 11(12) on charts A-E and rows 19(20) on chart F.)

If you are unfamiliar with following a filet crochet chart:

- Each filled block is three dc, each empty block is dc, ch-2.
- If first block is empty, ch 5, sk next 2 sts or ch-2 sp, dc in next st.
- If first block is filled, ch 3, 2 dc in next ch-2 sp or dc in next 2 sts.



Download PDF file from pattern page on Crochet Uncut

Front Edging

Round 1	Ch 1, turn, sc in first dc, pm, sc in ea dc and 2 sc in ea ch-2 sp across, pm in last sc of front edge, 3 sc in end of ea row down across side one, 3 sc in ch-2 sp of back, 3 sc in end of ea row across side two, join with sl st to first sc. Move marker to last sc made.
---------	---

Izabella Baby Bonnet

Neckline Edging - The neck edging is made across the two sides of the bonnet crown and space at edge of crown. Do not continue to front of crown.

Row 1	Ch 1, turn, sc in ea sc across both sides, ending at marker. Remove marker.
Row 2	Ch 6 (beg trc, ch-2 sp), *sk next two sc, trc in next sc, ch 2,* rep from * to * across ending in marked sc.
Row 3	Ch 1, turn, sc in ea trc and 2 sc in ea ch-2 sp across. Fasten off.

Finishing ...

Weave in ends. Weave ribbon through the trc ch-2 sps of neck edging.



Start of bonnet using chart E

Pattern and photos © Darlisa Riggs, CatBird Studios